

Average Weight Terminal

AD-1032M

New easy to use Control Terminal for use in a whole range of Average Weight Applications

The AD-1032M is an IP65 compact, stand alone QA system, allowing professional quality control by weight of up to 500 products, generating 3 independent statistical reports per product.

Large buttoned, simple to use, and menu driven, the system creates graphical prints of Mean, standard deviation and proportional bar chart, on standard manual printer paper. Fill quantities of liquids and solid products are checked using the AD-1032M by regular sampling during the production process, allowing full compliance with e-mark legislation, in addition to compliance with ISO and GLP.



Printout example (part 1)

```
Main
Serial No.: 12351037
Date: 26/10/1999
Time: 16:36
```

COFFEE 200G

```
Product Code: 011
Start Batch No: A26-126
End Batch No: A26-127

Nominal: 200.0 g
Tare: 175.0 g
T1 Limit +/-: 9.000 g
T2 Limit +/-: 18.000 g
Plausibility: 25.0 %
```

```
0001 200.9 g
0002 200.9 g
0003 210.9 g > T1
0004 195.9 g
0005 194.9 g
0006 184.9 g < T1
0007 204.9 g
0008 204.9 g
0009 194.9 g
0010 194.9 g
0011 199.9 g
0012 200.1 g
0013 200.1 g
0014 200.1 g
0015 201.1 g
```

```
Main Final
Total Wt: 2989.3 g
Samples: 15
Ave < Nom: 199.29 g
%Low: 6.66 %
%High: 6.66 %
Under fill: 10.7 g
```

```
Max: 210.9 g
Min: 184.9 g
Range: 26.0 g
Std Dev: 5.89 g
```

```
No > T1: 1
No > T2: 0
No < T1: 1
No < T2: 0
```

Designed for use with the AD-1131 printer and a wide range of A&D Balances and Scales.

Main Features

- 500 (PLU) product system
- Easy operation via large keys
- Large, easy to read backlit display
- Density setting for liquid/volume records
- Simple product selection
- IP-65
- Graphical printouts of Mean, Standard Deviation, Proportional Bar Chart
- 3 statistical printouts per product
- Continuous display of interim statistics
- Menu driven
- GLP compliant
- Standby mode
- Wall or surface mounted
- Plausibility setting

e

A&D
A&D INSTRUMENTS

AD-1032M

Specifications

Number of Products	500 max.
Memory	Up to 9999 weighments per product & 11200 weighments in total
Operating Temperature	5°C ~ 40°C
Physical Dimensions (mm)	290(L) x 160(W) x 65(H)
Weight	1.2kg (excluding battery option)
Power	230 VAC (AC Adaptor) 50Hz
Battery Option (Approx.)	7 A/h Ni-cad (with backlight 10hrs, without backlight 50 hrs)
Standard Accessories	Manual, AC Adaptor, Balance Data Cable, Wall Mounting Bracket, Printer Data Cable

Options:

- AD-1032M - OP-09 ... Rechargeable Battery Pack (Nicc)
- AX-1032M - SCA ... Scale Data Cable
- AX-1032M - BCS ... Balance Data Cable
- AX-1032M - PC-09 ... PC Data Cable
- AX-1032M - 1131 ... Printer Data Cable
- AX-1032M - WIN ... PC Software

Accessories:

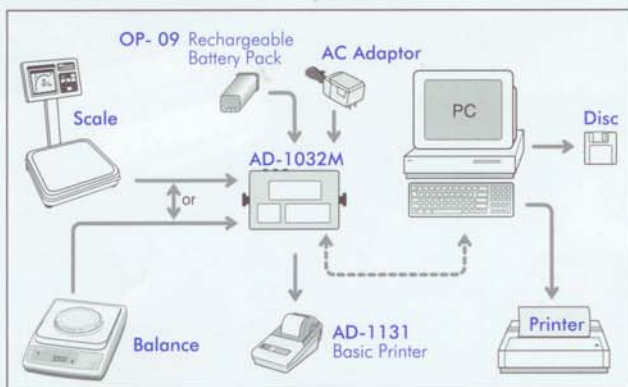
- AD-1131 ... Standard Printer

AD-1131 Basic Printer

- Basic printing functions
- Clear impact dot matrix print
- Accepts RS-232C and Current Loop input from any A&D scale, balance or indicator
- Selectable Language Print
- Internal rechargeable battery or AC Operation (Adaptor included)

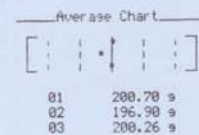
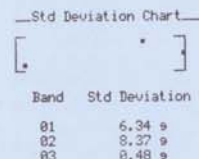
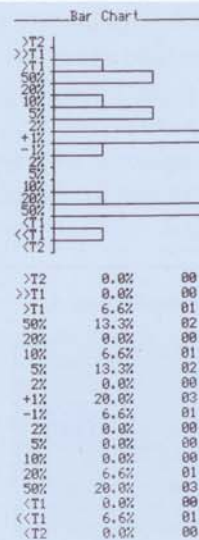


Communication and Control



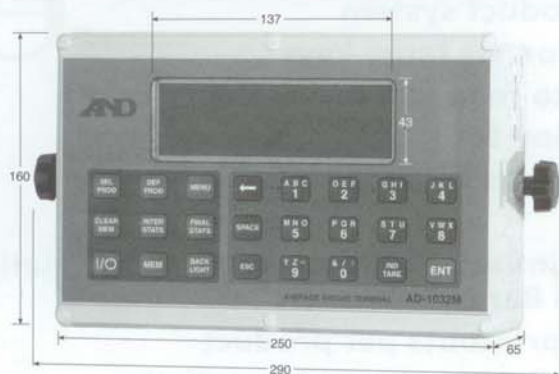
The AD-1032M works with most A&D 1g, 0.01g, 0.001, 0.1kg, 0.01kg scales and balances. The AD-1032M forms part of an IP65 system when used with an A&D FS or HP scale or AD-4327 indicator.

Printout example (part 2)



Date: 26/10/1999
Time: 16:45
Signature:

Dimensions (mm)



A&D

A&D INSTRUMENTS



A&D Instruments • European Headquarters •
Abingdon Science Park, Abingdon, Oxford OX14 3YS U.K.
Phone: +44 (0)1235 550420, Fax: +44 (0)1235 550485

A&D Instruments • Verkaufsbüro Deutschland •
Berner Straße 64, D-60437 Frankfurt am Main, Deutschland
Phone: +49 (0)69 5071017, Fax: +49 (0)69 5072054

Internet: <http://www.andinstruments.co.uk/europe> e-mail: sales@andinstruments.co.uk

Your Authorised A&D Distributor:

