



M108

**BASIC PROGRAMMABLE
VISIBLE
SPECTROPHOTOMETER**

User Interface

Operations Include:

- Basic Mode (Abs, %T)
- Quantitative
- Kinetics
- DNA/Protein
- Bluetooth Printer



MAIN FEATURES:

- Stores up to 200 methods/results
- Concentration calibration: up to 8 standards
- 3 replicates, linear fit or linear fit through zero curves
- Large sample compartment (up to 100mm pathlength cells)
- 4 x 10mm glass cells included

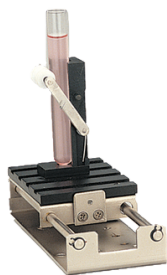
PC Control

The M108 has a USB socket for PC control and transfer of results to a PC. Data output includes: method number and name, wavelength, %T, Abs, date and time. Comprehensive Camspec Application Software is available, together with small PC programs dedicated to specialist tasks.



www.spectronic-camspec.co.uk

EMAIL: sales@spectronic.co.uk TEL: +44 (0)113 286 4536

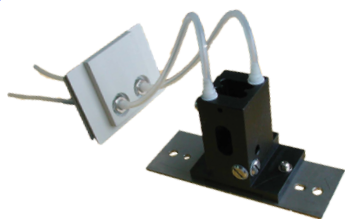


TEST TUBE

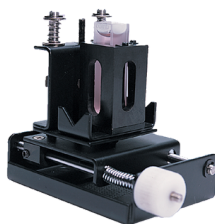


PELTIER/SIPPER

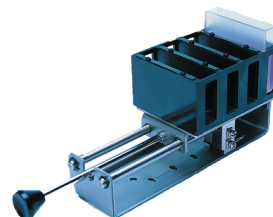
**A selection of the many
Cell Compartment
Accessories available**



THERMOSTATTED
CELL HOLDER



MICRO CELL HOLDER



0-50mm 4 X CELL
MANUAL

Technical Specifications

Display

Light source

Monochromator

Detectors

Wavelength Range

Wavelength Accuracy

Wavelength Repeatability

Noise

Zero Drift

Bandpass

Stray Light

Photometric Accuracy

Photometric Range

Printer Interface

Computer Interface

Power Requirements

Dimensions

Weight

4 lines x 20 character LED

Tungsten-Halogen

1200 lines/mm grating

Silicon Photodiode

325 - 1000nm

± 2 nm

± 1 nm

$< 0.001A$ @ 500nm 0A

$< 0.003A$ per hour after warm-up

4 nm

$< 0.1\%T$ @ 340 nm

$\pm 1\%$ 0-2 A

-1 to 2.5A, 0-125%T and -9999C and +9999C

Bluetooth

USB for PC control plus USB for data export

110/120V, 220/230V, 50/60 Hz, 135VA

510 x 420 x 210 packed 645 x 535 x 370

14Kg packed 17Kg



www.spectronic-camspec.co.uk

EMAIL: sales@spectronic.co.uk TEL: +44 (0)113 286 4536