

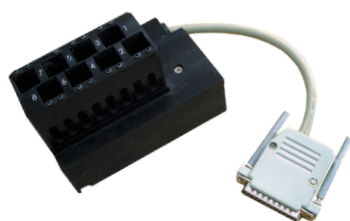


M501

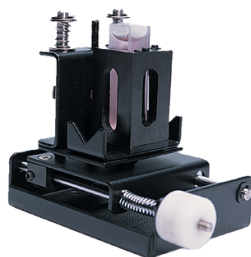
**UV-VISIBLE SINGLE
BEAM SCANNING
SPECTROPHOTOMETER**

MAIN FEATURES:

- Basic Mode - Absorbance, %T and Concentration
- Quantitative - Up to 10 standards
- Wavelength Scanning
- Kinetics - For time course scanning or reaction rates
- DNA/Protein - Concentration & DNA Purity are calculated
- Multi-wavelength - up to 10 wavelengths
- Performance Validation - for the GLP compliant laboratory

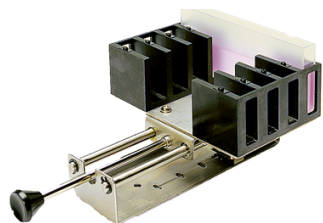


8 CELL AUTO CHANGER



MICRO CELL HOLDER

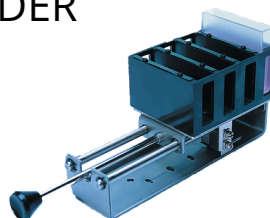
**A selection of the many
Cell Compartment
Accessories available**



0-100 mm 4 x CELL
MANUAL CHANGER



PELTIER/SIPPER



0-50mm 4 X CELL
MANUAL



PC Control User Interface

The M501 has 2 x USB outputs. One for the download of data to a USB Memory stick to be analysed offline and one for the control of the spectrophotometer when the UV/VIS Analyst software is purchased. Comprehensive Camspec Application Software is available, together with small PC programs, dedicated to specialist tasks.

Operations Include:

- Basic Mode (Abs, %T, Conc)
- Quantitative
- Wavelength Scanning
- Kinetics
- DNA/Protein
- Multi-wavelength
- Performance Validation

Technical Specifications

| | |
|---------------------------|---|
| Display | LED Display |
| Light sources | Tungsten-Halogen and Deuterium |
| Monochromator | Littrow type with 1200 lines/mm grating |
| Detector | Silicon Photodiode |
| Wavelength Range | 190 - 1100nm |
| Wavelength Accuracy | ± 1nm |
| Wavelength Resolution | 0.1nm |
| Wavelength Repeatability | ± 0.05nm |
| Baseline Flatness | ± 0.005 (After 1 Hr warm up 1100 – 200nm) |
| Zero Drift | < 0.003A per hour after warm-up |
| Baseline Stability | ± 0.001A |
| Bandpass | 4nm (2nm option) |
| Stray Light (A.S.T.M.) | <0.05%T @ 220nm and 340nm |
| Photometric Repeatability | ± 0.002 Abs |
| Photometric Accuracy | Better than 1% @ 0.5A, 1A, 2A |
| Photometric Range | -0.7 to 3A, 0 to 200%T, 0 to 9999 Conc |
| Printer Interface | Centronic parallel for A4 inkjet printers |
| Computer Interface | USB Port |
| Power Requirements | 110/120V, 220/230V, 50/60 Hz, 110VA |
| Dimensions | 550 x 420 x 270 packed size 645 x 535 x 370 |
| Weight | 18kg Nett 24Kg Packed weight |

