



# M508

**BASIC  
PROGRAMMABLE UV-VIS  
SPECTROPHOTOMETER**

## User Interface

Operations Include:

- Basic Mode (Abs, %T)
- Quantitative
- Kinetics
- DNA/Protein
- Bluetooth Printer



## MAIN FEATURES:

- Stores up to 200 methods/results
- Concentration calibration: up to 8 standards
- 3 replicates, linear fit or linear fit through zero curves
- Large sample compartment (up to 100mm pathlength cells)
- 2 x 10mm UV cells and 4 x 10mm glass cells included

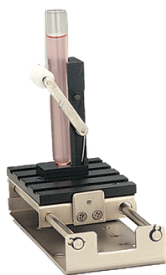
## PC Control

The M508 has a USB socket for PC control and transfer of results to a PC. Data output includes method number and name, wavelength, %T, Abs, date and time. Comprehensive Camspec Application Software is available, together with small PC programs, dedicated to specialist tasks.



[www.spectronic-camspec.co.uk](http://www.spectronic-camspec.co.uk)

EMAIL: [sales@spectronic.co.uk](mailto:sales@spectronic.co.uk) TEL: +44 (0)113 286 4536

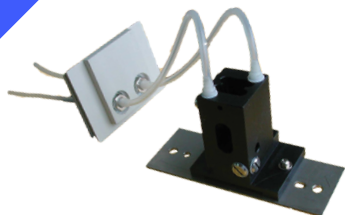


TEST TUBE

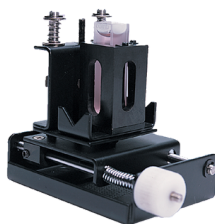


PELTIER/SIPPER

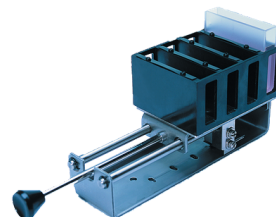
**A selection of the many  
Cell Compartment  
Accessories available**



THERMOSTATTED  
CELL HOLDER



MICRO CELL HOLDER



0-50mm 4 X CELL  
MANUAL

## Technical Specifications

Display	4 lines x 20 character LED
Light sources	Tungsten-Halogen and Deuterium
Monochromator	1200 lines/mm grating
Detectors	Silicon Photodiode
Wavelength Range	200 - 1000nm
Wavelength Accuracy	$\pm 2$ nm
Wavelength Repeatability	$\pm 1$ nm
Noise	$< 0.001A$ @ 500nm 0A
Zero Drift	$< 0.003A$ per hour after warm-up
Bandpass	4 nm
Stray Light	$< 0.1\%T$ @ 220nm and 340nm
Photometric Accuracy	$\pm 1\%$ 0-2 A
Photometric Range	-1 to 2.5A, 0-125%T and -9999C and +9999C
Printer Interface	Bluetooth
Computer Interface	USB for PC control plus USB for data export
Power Requirements	110/120V, 220/230V, 50/60 Hz, 135VA
Dimensions	510 x 420 x 210 packed 645 x 535 x 370
Weight	14Kg packed 17Kg

